

Elizabeth Gemperlein  
*Fool's Paradise*

September 25-November 6, 2015

Opening Reception: Friday, September 25, 2015



Marissa Lehner  
*Anima Mundi*



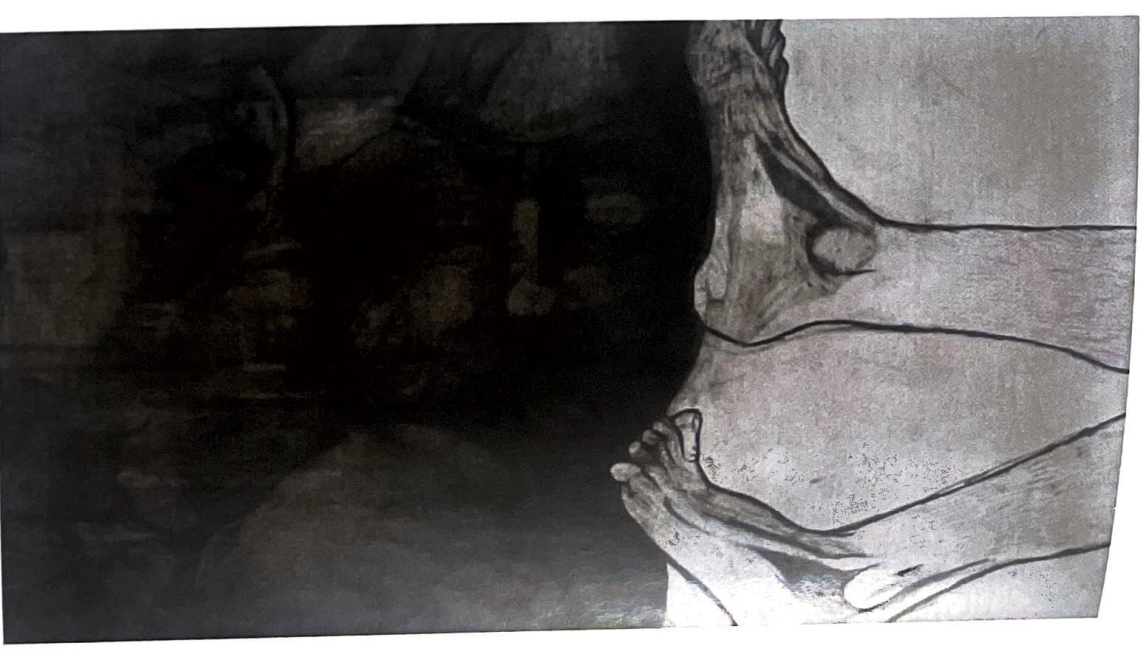
Buffalo Arts Studio

## Elizabeth Gemperlein, *Fools Paradise*

Elizabeth Gemperlein draws compelling images depicting the impact of human excess on nature's fragility. Influenced by Romanticism and landscape painting, her work challenges the myth of a world consisting of endless natural resources. She creates rich imagery using graphite with a variety of surfaces including paper, masonite, and even packing tape. The materials themselves, as well as the presentation of the final work, diminishes the "preciousness" of the art object and focuses the viewer on the details within the drawings.

Human figures are often suspended amidst flora and fauna conveying the complex relationships between each. She portrays man's conflicting impulses to care for and consume land and wildlife as reflections of skewed values and priorities. She also tells the story of a distant romantic landscape that laments the loss of a more balanced co-existence and of animals forced to inhabit a hostile environment where humans are too often passive witnesses. Gemperlein's drawings lead her audience to question their relation to nature, and to rethink their personal connections to the natural world.

Cover image: *Vigil*, graphite on masonite, 2015

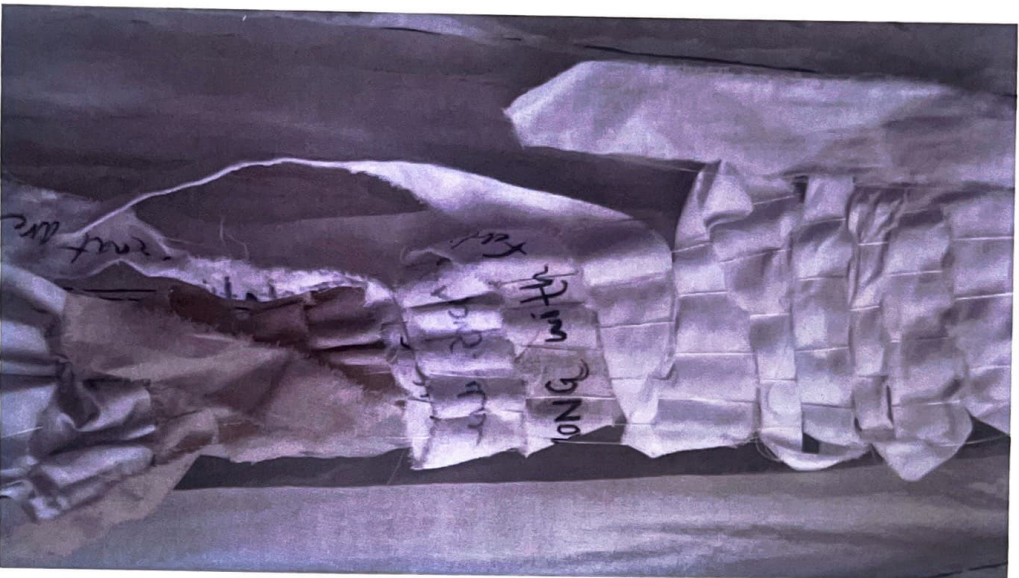


Detail: *Walking on Heads*,  
graphite on paper, 2015

## **Marissa Lehner, *Anima Mundi***

Marissa Lehner creates sculptures and spaces that are poetic and accessible for her audience. She initiates an immersing sensory experience for the audience through the combination of simple forms and textures as well as materials and methods. Her work addresses large themes such as birth, death, fragility, and futility. Her use of materials with natural and familiar origins renders complex emotions more tangible. Her use of reclaimed materials allows multiple histories to intertwine while leaving space for the audience to bring their own personal memories and associations to the work.

This installation also acts as a symbolic self-portrait representing the oscillation between two often conflicting states of mind. The text, which is handwritten on strips of linen and woven through the sculpture's canopy, are meant to provide solace. Lehner invites visitors to write their own affirmations and add them to the installation. Much as Lehner brings her own emotions to each space in which she installs her work, she hopes that her audience will do the same.



Detail: *Anima Mundi*,  
mixed media installation

Cover image: *Anima Mundi*, mixed media, 2015



# Buffalo Arts Studio

Tri-Main Center

2495 Main Street, Suite 500

Buffalo, NY 14214

(716) 833-4450

[www.buffaloartsstudio.org](http://www.buffaloartsstudio.org)

Gallery hours: Tuesday - Friday 10am-4pm, Saturday 10am-2pm



Elizabeth Gemperlein is an artist based in Western New York. Her work has been shown throughout the US as well as in China and Sri Lanka. She received her MFA from the University at Buffalo and has taught widely at universities in the US, China, India and Sri Lanka. She is currently an adjunct lecturer at Genesee Community College and a visiting artist at the Albright-Knox Art Gallery.



Marissa Lehner is an artist and educator from Buffalo, New York. She received her BFA from Alfred University, and MS in Art Education from Nazareth College. She is committed to community arts engagement and is one of the founders of Emerging Leaders of the Arts Buffalo (ELAB). She is a former board member of the Buffalo Arts Studio and is currently the project director for the Ferry Street Corridor Project.

Major support provided by: Erie County Cultural Funding, M&T Bank, and NYSCA Visual Arts Program

Additional exhibition support provided by: Ashkers, DoubleTree Club Hotel, Gates Circle Wine & Liquor, Flying Bison Brewing Company, North American Breweries and individual donors.



**M&T Bank**



**Council on  
the Arts**

New York State Council on the Arts with the support  
of Governor Andrew Cuomo and the  
New York State Legislature.